



9 Paris Close

, Ashby-De-La-Zouch, LE65 2YB

Offers In The Region Of £315,000

Here's a stronger, more premium version that reflects the improvements and better sells the lifestyle:

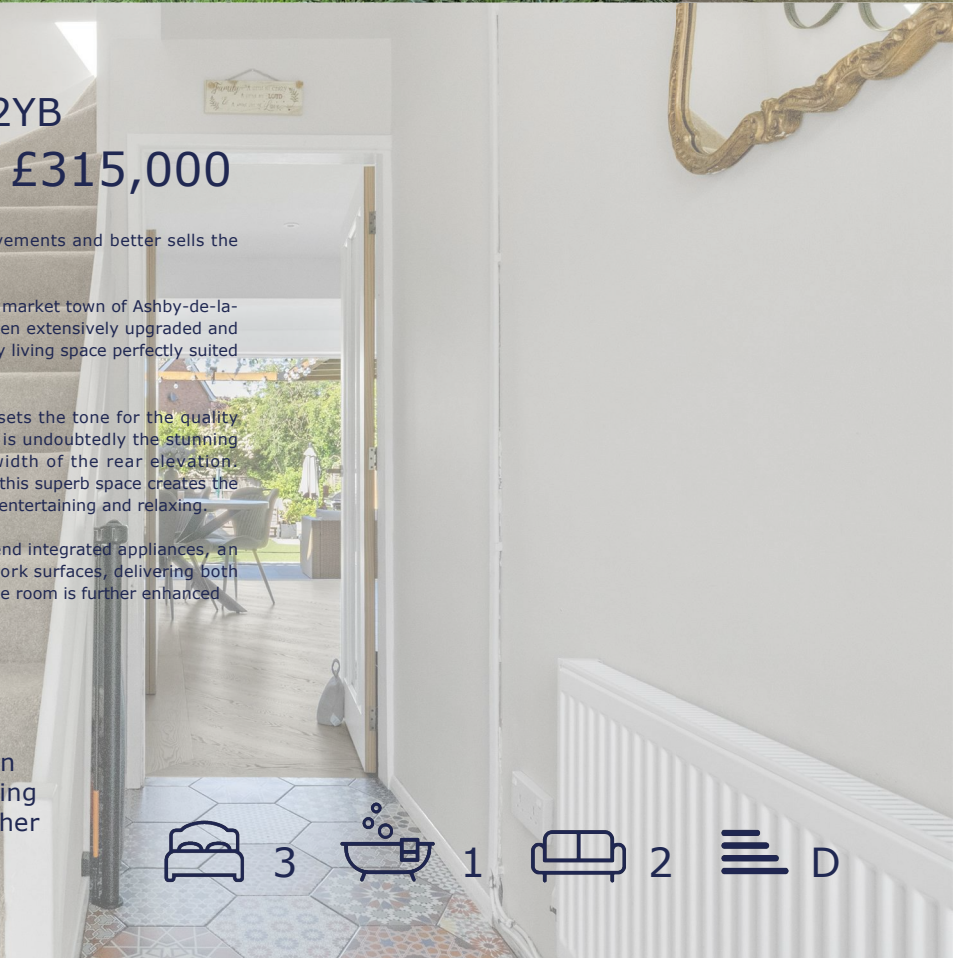
Situated within a highly sought-after residential development in the market town of Ashby-de-la-Zouch, this exceptional three-bedroom semi-detached home has been extensively upgraded and reconfigured by the current owners to create a stylish, contemporary living space perfectly suited to modern family life.

Upon entering, you are welcomed by a bright entrance hall that sets the tone for the quality found throughout the property. The standout feature of the home is undoubtedly the stunning open-plan living, dining and kitchen space spanning the full width of the rear elevation. Thoughtfully redesigned and finished to an impressive specification, this superb space creates the true heart of the home, offering seamless areas for cooking, dining, entertaining and relaxing.

The bespoke kitchen has been fitted with premium cabinetry, high-end integrated appliances, an instant boiling water tap, an integrated hob extractor and quality work surfaces, delivering both style and practicality in equal measure. Flooded with natural light, the room is further enhanced

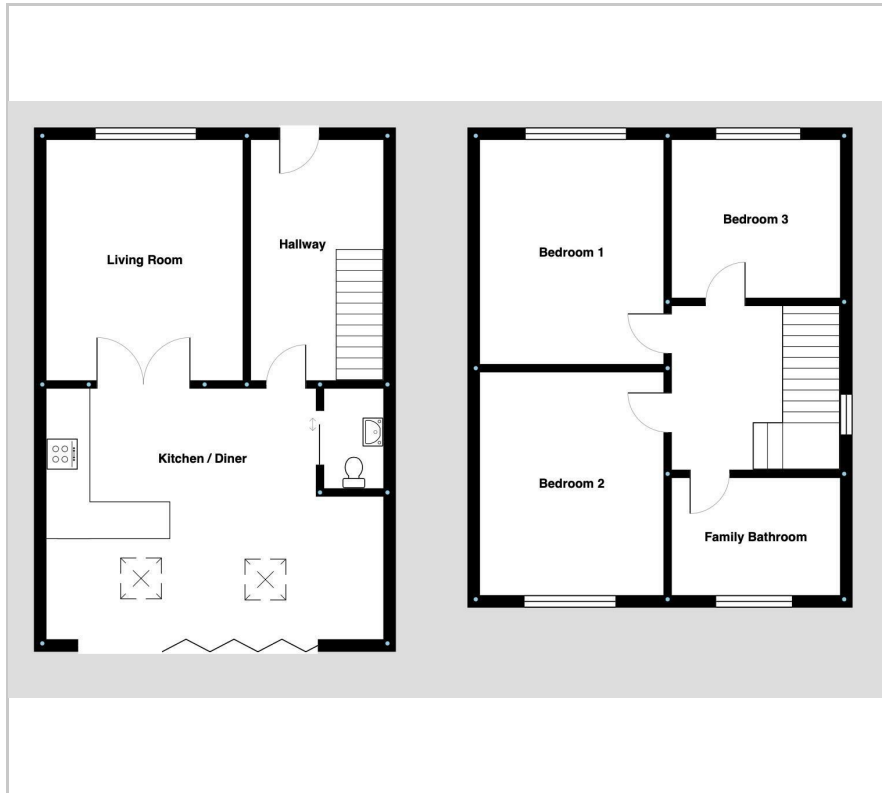
Viewing

Please contact our Berkley Leicester Office on 0116 2544755 if you wish to arrange a viewing appointment for this property or require further information.



 3
  1
  2
  D

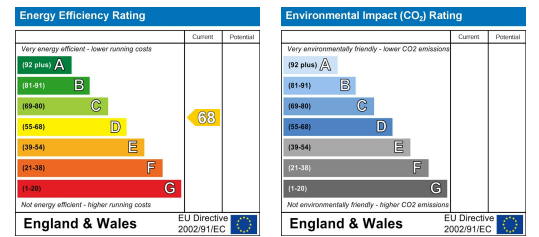
Floor Plan



Area Map



Energy Efficiency Graph



These particulars, whilst believed to be accurate are set out as a general outline only for guidance and do not constitute any part of an offer or contract. Intending purchasers should not rely on them as statements of representation of fact, but must satisfy themselves by inspection or otherwise as to their accuracy. No person in this firm's employment has the authority to make or give any representation or warranty in respect of the property.